

20ft Timberline™ Hybrid Modular Tapered Display • TL1002F-T20



Single-Sided Graphic

Product Specifications

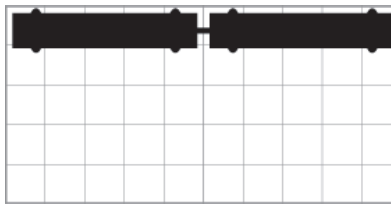
Display Dimensions	238.5" w x 96" h x 20" d
Weight	120 lbs each case
Case Dimensions	27.5" w x 48" h x 13.5" d
Acrylic Table Dimensions	24" w x 36" h x 16" d
Acrylic Shelf Dimensions	9.5" w x 18.75" d
Graphic Area Size of Center Panel	80" w x 80" h
Graphic Area Size for Each end Panel	16.75" w x 81.5" h
Set up time	40 minutes 2 people



*Monitor not included

About This Product

Our Timberline™ Hybrid Series gives you the ultimate in versatility. Customizable modular displays can be arranged in numerous configurations. Displays are easy to set up and adjust to fit any size area. Showcase your products for your tradeshow or special events with a variety of options such as reception desks and shelves.



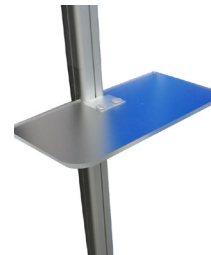
Aerial grid of 10' x 10' space



Side View

Package Includes

- (2) Modular display frames
- (2) Metal fusion printed headers
- (1) Joiner panel
- (2) Center panels
- (2) Wave top canopies
- (2) Dye-sub fabric side panels
- (2) Acrylic reception desks
- (4) LED lights
- (6) Acrylic shelves
- (1) Vesa compatible large monitor mount- supports up to a 50" LCD screen.
- **Not to exceed 50 lbs.**
- (2) Molded plastic wheeled cases.
- Interior dimensions:
26" and 24"(inset)w x 45.5" h x 9.375" d
- (1) Set of instructions



Optional Items

- Custom printed canopies
- Small monitor mount

