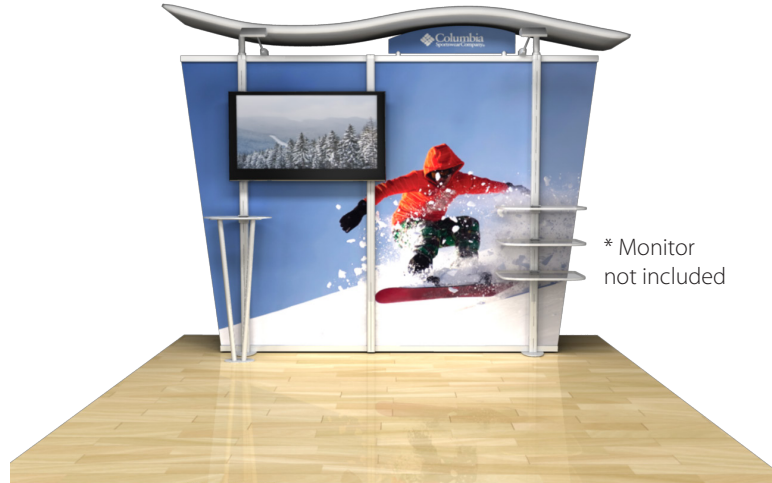


10ft Timberline™ Hybrid Modular Monitor Tapered Display • TL1002F-T-TV



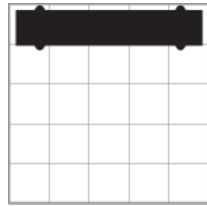
Single-Sided Graphic

Product Specifications	
Display Dimensions	117.5"w x 96"h x 20"d
Weight	120 lbs.
Case Dimensions	27.5"w x 48"h x 13.5"d
Acrylic Shelf Dimensions	9.5"w x 18.75"l
Acrylic Table Dimensions	24"w x 36" h x 16"d
Set Up Time	40 minutes, 2 people

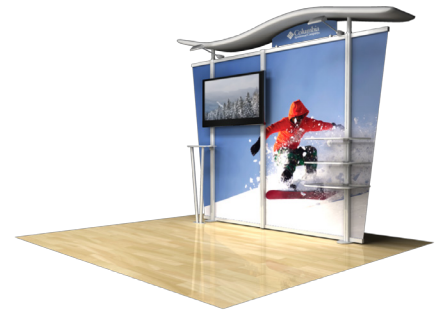


About This Product

Our Timberline™ Hybrid Series gives you the ultimate in versatility. Customizable modular displays can be arranged in numerous configurations. Displays are easy to set up and adjust to fit any size area. Showcase your products for your tradeshow or special events with a variety of options such as reception desks and shelves.



Aerial grid of 10' x 10' space



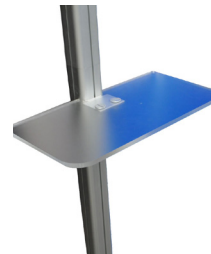
Side View

Package Includes

- (1) Modular display frame
- (1) Center fabric graphic
- (2) Wing fabric graphics
- (1) Monitor mount for a 30"-50" screen.

Not to exceed 50 lbs.

- (1) Wave canopy with fabric
- (3) Acrylic shelves
- (1) Metal fusion printed header
- (2) LED lights
- (1) Frosted acrylic reception desk
- (1) Molded plastic case
- (1) Instructions



Optional Items

- Custom printed canopy
- Small monitor mount

