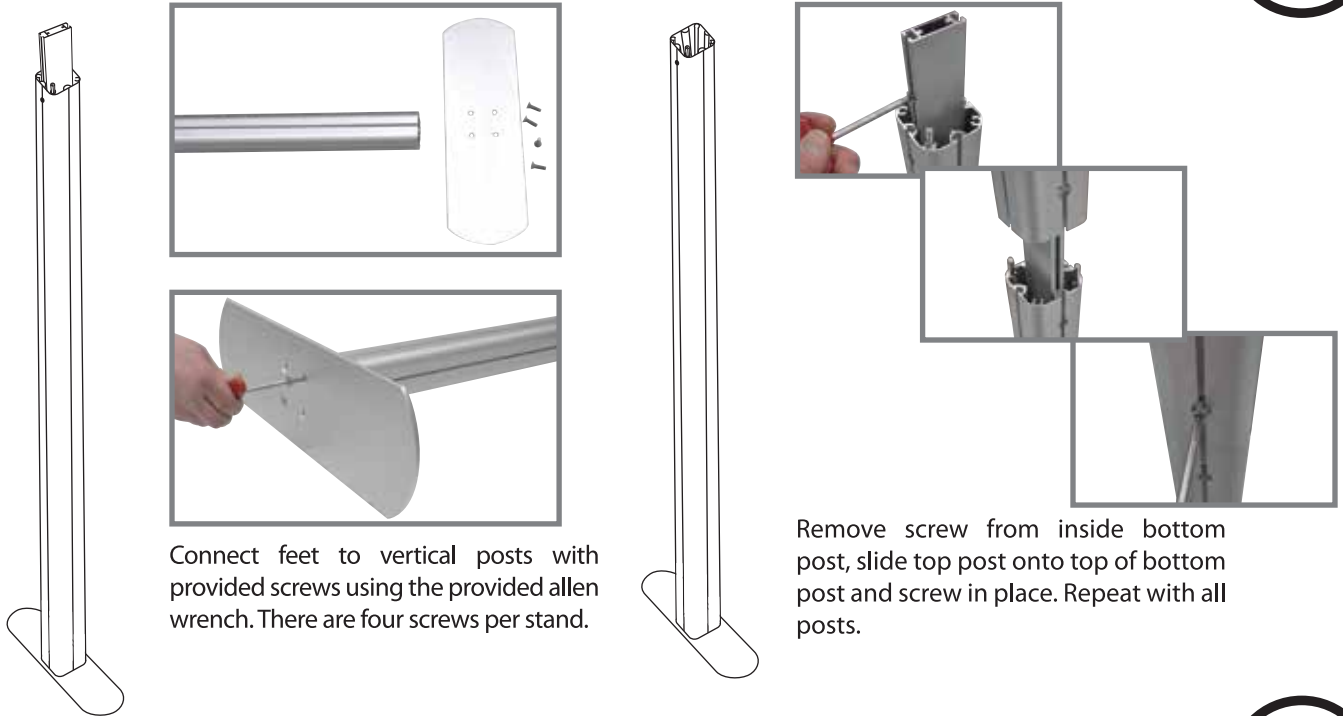


TLKIT4 Hybrid Display

Setup Instructions for TLKIT4

STEP 1

VERTICAL SUPPORTS Each 30' Kit includes: 6 posts, 6 feet, 24 screws



Connect feet to vertical posts with provided screws using the provided allen wrench. There are four screws per stand.

Remove screw from inside bottom post, slide top post onto top of bottom post and screw in place. Repeat with all posts.

STEP 2

MAIN HORIZONTAL SUPPORTS Each 30' Kit includes: 6 main bars (2 pieces per bar), 4 joiner bars, 6 header panel retainers



Remove the screw, slide into second half of the bar, replace screw and tighten with tool. Insert header panel retainers for header now.



Slide graphics into grooves of the horizontal top bars. Then connect top horizontal bars into vertical posts. Repeat with joiner bars.



Once the top bar is in place slide graphic into bottom horizontal bar and connect the same way. Now that the horizontal bars are in place you can push the edges of the graphic into the vertical post grooves. ****If attaching the optional Slat Walls, slide the screws into the top of the post at this point.**

END PANELS - Each 30' Kit includes: 2 graphics & 4 bars

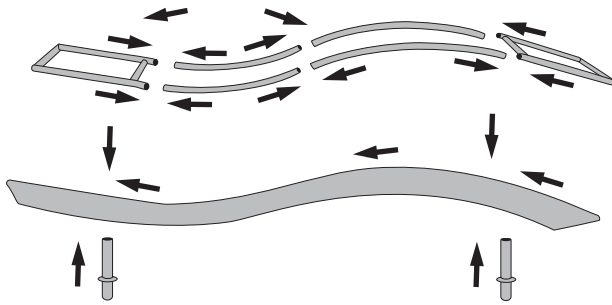
STEP
3



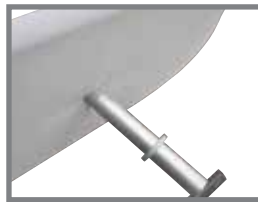
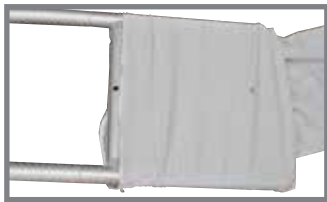
Fabric Ends: insert graphics the same way as main panel. Slide edges of graphic into top & bottom bars. Then insert bars into posts on sides of the display.

TOP WAVE - Each 30' Kit includes: 18 bars, 6 posts, 6 screws & 3 fabric cover

STEP
4



The pieces are labeled so they easily snap together.



Once the wave top hardware is together slide the fabric cover over like a pillow case and zip up. After cover is on the hardware, push screws through the top provided holes and screw into posts on bottom side.



Now insert the wave top assembly into the top of the vertical posts.

SLAT WALLS - Each 30' Kit includes: 4 slat walls and 8 bolts

STEP
5

Slat walls can be attached at this time by pushing the screws that you attached in step 2 through the holes in the slat walls then using the bolt top to secure.



HEADER *Each 30' Kit includes: 3 acrylic headers*

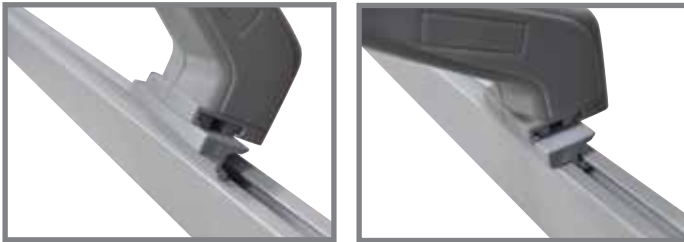
You can attach the header into the panel retainers that you inserted into the top horizontal bar now. These simply slide in and tighten.



STEP
6

LIGHTS *Each 30' Kit includes: 6 lights, 6 light cords & 6 light clips*

Slide the light clip into the bottom of the lights. Then slide the light into the top horizontal bar as shown.



STEP
7

TABLE *Each 30' includes: 6 posts, 12 screws, 3 bottom plates, 3 acrylic top plate, 6 large bolts, 6 wing nuts & 3 clamps*



Assemble table legs together with the top and bottom base plates and screws. Then attach acrylic table top with the large bolts and wing nuts to top of base plate on legs. Attach clamp to back of acrylic table top for insertion into vertical posts.

STEP
8

SHELVES *Each 30' includes: 12 acrylic shelves, 12 brackets, 18 large bolts & 18 wing nuts*



Attach brackets into vertical posts, tighten then place acrylic shelves on top and secure using large bolts and wing nuts.

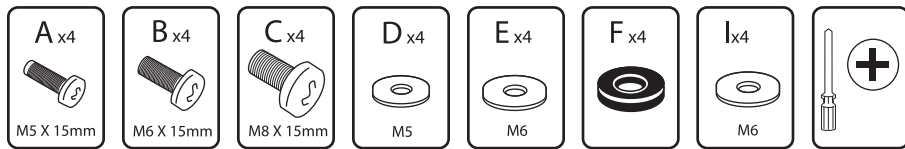
STEP
9



Your display should look something like this when all together.

TL1007 Monitor Mount for 30-50 LCD

Each Kit includes: 1 monitor mount w/ bars attached, 12 screws & 16 washers

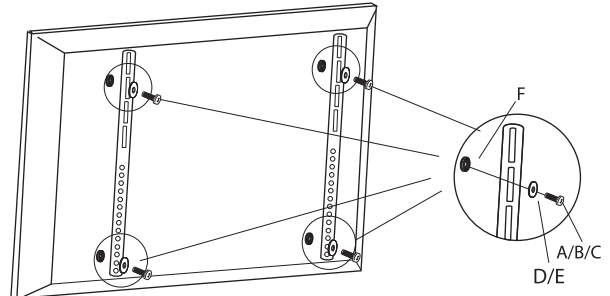


Safety Warning: Be careful to make sure there are no missing or defective parts. Never use defective parts. Improper installation may cause damage or serious injury.

STEP 1

Installing bars to your LCD monitor

- 1) To ensure optimal installation, this kit includes various screws of different diameters and lengths.
- 2) Place your TV screen down on a soft, flat surface and locate the threaded mounting points that are located on the back of the display.
- 3) Determine which screw (A/B/C) is of the correct length by carefully inserting a straw or toothpick and mark how deep the mounting point is.
- 4) If your display has a curved back or a recessed thread mounting point, a spacer (F) must be used.
- 5) Place the spacer (F) between the mounting bracket and display.
- 6) According to the size of the display's hole, choose the corresponding screw and hole on the rectangle washer, then thread them in line.



Notice:

First, if the TV back is accurate you will need to use (F), if it's flat that is unnecessary. Second, the choice of screw (A/B/C) should be according to the size and depth of the install aperture in the back of the TV.

STEP 2

Installing monitor mount to display

Once the graphic has been installed into the frame, pull out the desired area where the monitor mount will be installed. Insert the support bars into the grooves of the display post and lock using the tool (when complete is should look like the photo below).



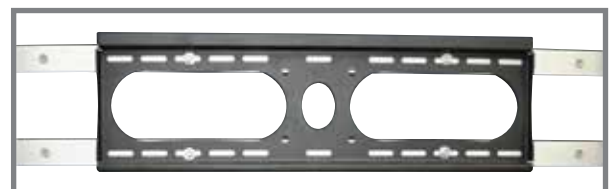
STEP 3

Installing monitor to monitor mount

Mount the monitor by carefully lining up the bracket bars on the back of the monitor onto the horizontal bars just installed on the frame. The monitor is attached correctly when you hear it click. To remove the monitor, pull down strings to release grip.



side view



TLKIT4 Hybrid Display

Parts List for TLKIT4



4 Posts, 2 parts each



4 Feet, w/ 4 screws each



2 Center Bars, 2 parts each



2 Joiner Bar, top & bottom



4 End Bars



4 Header Panel Retainers



2 Wave tops, 6 bars, 2 posts,
2 screws & 1 fabric cover per unit



2 Tools



4 Lights w/ clips



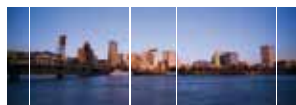
2 Tables, 2 posts, 4 screws, 1 bottom
plate, 1 acrylic top plate, 2 large
bolts, 2 wing nuts & 1 clamp per table



6 Shelves, 3 acrylic shelves,
3 brackets, 6 large bolts & 6 wing nuts
per shelf



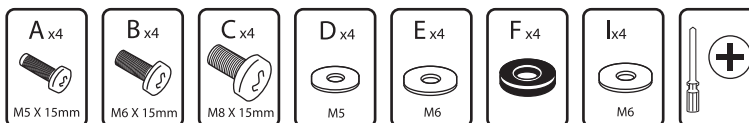
2 Headers, this may be printed or
etched, but plain is standard.



5 Graphics, 2 main panel,
1 joiner, 2 straight end panels



2 Slat Walls, 2 slatwalls, 4 bolts



See setup Instructions for monitor mount on page 4



TLKIT1 also includes:
3-40" Wave Tube
Counters