



Graphic case wrap option

Product Specifications

Case Dimensions	20"W x 39"H x 13"D
Counter Dimensions	38"W x 38"H x 18.5"D
Weight	24 lbs
Boxed/Bag Dimensions	
Dimensional Weight	61 lbs

About This Product

Our Tower Case is a lightweight and portable solution for transport of your trade show display. When you are ready to setup, simply use the included support beams to convert your Tower Case into a functional counter!



Case-Front View



Case-Back View

Steps for case-to-counter conversion



Step 1: Open your case.



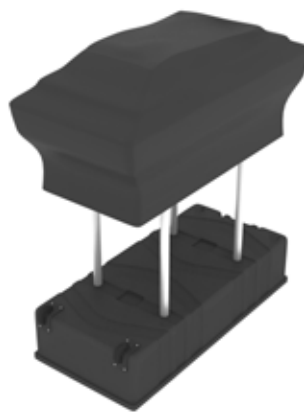
Step 2: Unpack your case. Make sure everything you see here is included in your Tower Case.



Step 3: Turn both sides of case over and insert the four poles into the holes to connect the top and bottom.



Step 4: Place counter top surface into the top case ensuring that the lip of the surface is facing upward.



Step 5: Pull black cloth (included with every Tower Case) or custom counter graphic over the top of the counter. Tuck the cloth under the the bottom case.



Step 6: Viola! You have successfully converted your Tower Case into an attractive and functional counter.